



Staats- und
Universitätsbibliothek
Bremen

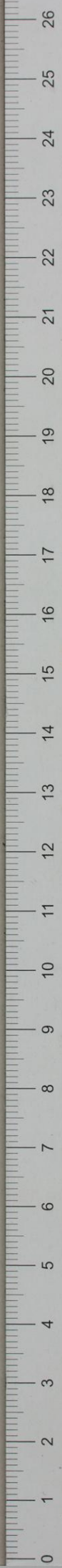
Staats- und Universitätsbibliothek Bremen

Digitale Sammlungen

P 14 / Nr. 12

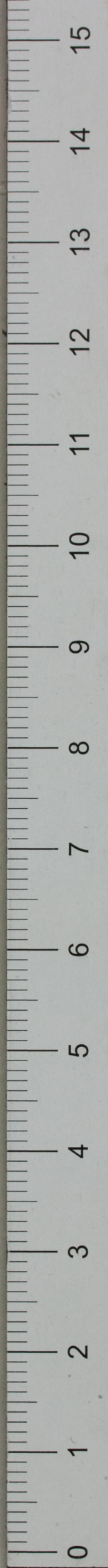
unbekannt; unbekannt, ohne Datum

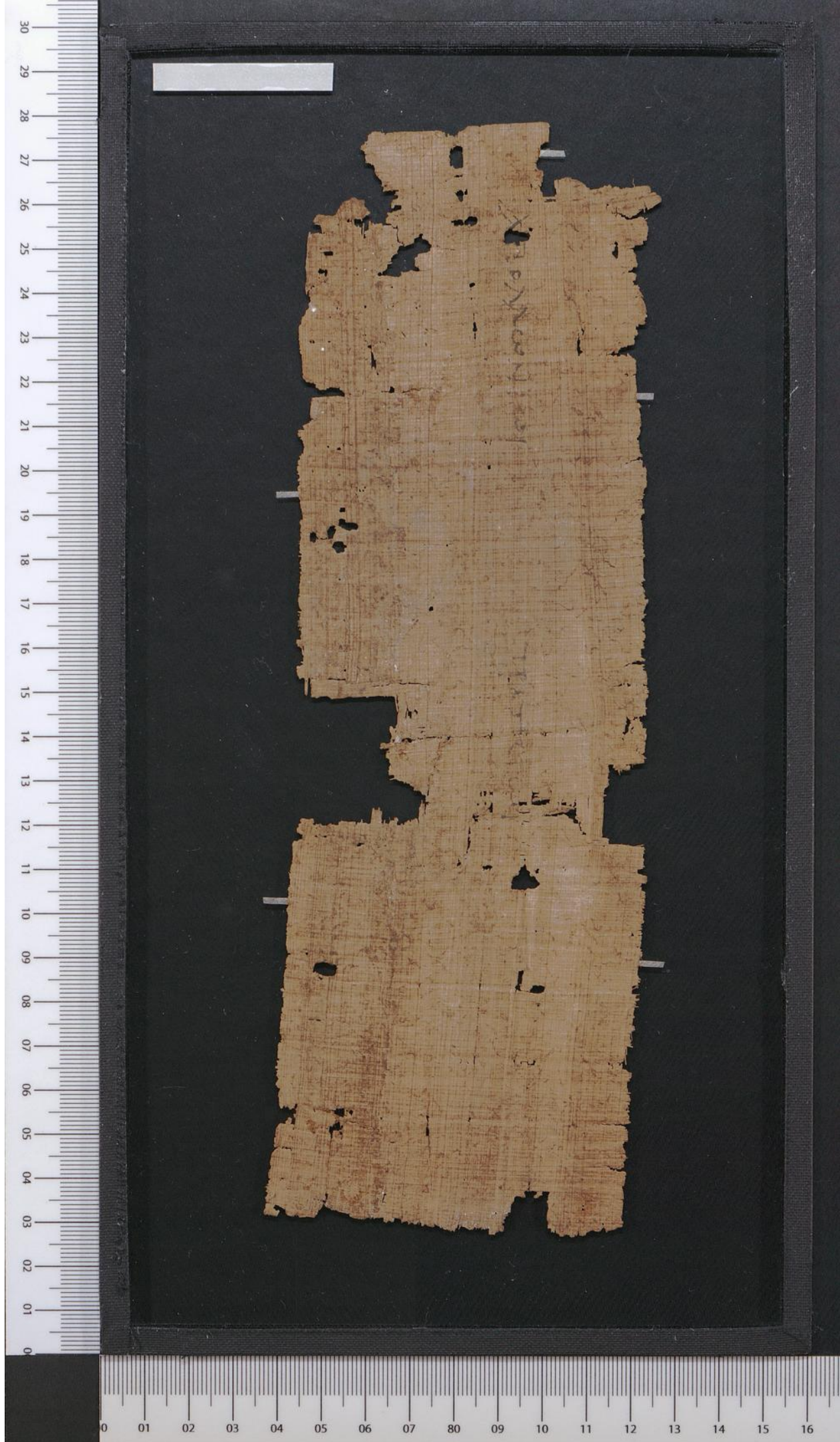
urn:nbn:de:gbv:46:1-1354



(ΕΠΙΣΤΟΛΗ) ΑΠΟ
 ΤΩΝ ΤΗΝΩΝ ΤΑΥ
 ΧΡΙΣΤΟΥ
 ΧΕΙΡΟΓΡΑΦΙΟΝ ΚΑΙ
 ΤΗΝ ΕΙΝΗ ΠΡΟΣ ΤΗΝ
 ΤΑΝΤΙΟΝ ΕΙΡΗΝΗ
 ΕΥΝ ΕΝΤΕΡΙΩΝ ΝΟΥ
 ΕΧΘΙΝΟΝ ΑΝΘΡΩΠ
 ΧΡΟΝΟΝ ΜΕΤΑ
 ΚΑΙΝ ΕΙΣΦΑΝ ΤΟΝ
 ΚΑΙΝ ΕΧΘΙΝΟΝ
 ΕΙΡΗΝΟΝ ΤΗΝ
 ΕΙΡΗΝΟΝ ΔΙΑΝ
 ΕΙΡΗΝΟΝ ΤΟΥ
 ΚΑΙΝΟΝ
 ΚΑΙΝΟΝ
 ΗΥΚΑΤΟ
 ΝΕΣΤΑΚΑΤΑ ΤΗΝ
 ΔΙΑΝΕΥΣΑΝ ΤΗΝ
 ΕΥΡΕΙΝΕΝ ΤΗΝ
 ΚΑΙΝΟΝ ΜΕΤΑ
 ΚΑΙΝΟΝ ΤΗΝ
 ΜΕΤΑ ΚΑΙΝΟΝ ΤΗΝ
 ΛΟΧΟΝ ΤΗΝ
 ΕΙΡΗΝΟΝ ΤΗΝ
 ΕΙΡΗΝΟΝ ΤΗΝ

Handwritten text on a palm-leaf manuscript strip, oriented vertically. The text is written in a dark ink and appears to be in a South Asian script, possibly Grantha or Tamil. The characters are arranged in a single column, with some characters appearing to be in a different script or a mix of scripts. The text is somewhat faded and difficult to read precisely, but it seems to consist of several lines of characters. There is a small hole or notch at the top of the strip, and a crack is visible near the bottom.





Small white label at the top left of the fragment.

Fragment of text written in a cursive script, possibly Greek or Latin, on a grid background. The text is partially obscured by damage and is difficult to decipher.

